



Digi Scrap Tutorial from

Digital Scrapper®

Reverse Your Template Layers in a Snap

By Barb Brookbank—May 21, 2013



Everyone thinks differently. I was contemplating this as I was designing a template for my Instagram photos. I created a square, and then I proceeded to create 11 more.

As layers are created in the Layers panel, they land on top of the last layer and are numbered accordingly. The lowest number is at the bottom, and the largest number is at the top.

Now here's my problem. I think number one should be at the top because I like to work from left to right and top to bottom when arranging photos in a grid. Luckily, there is a quick little trick to help solve this problem.

In this lesson, I'm going to show you how to create and arrange a grid design which will be a snap to use when it comes to adding photos.

Step One: Prepare the Workspace

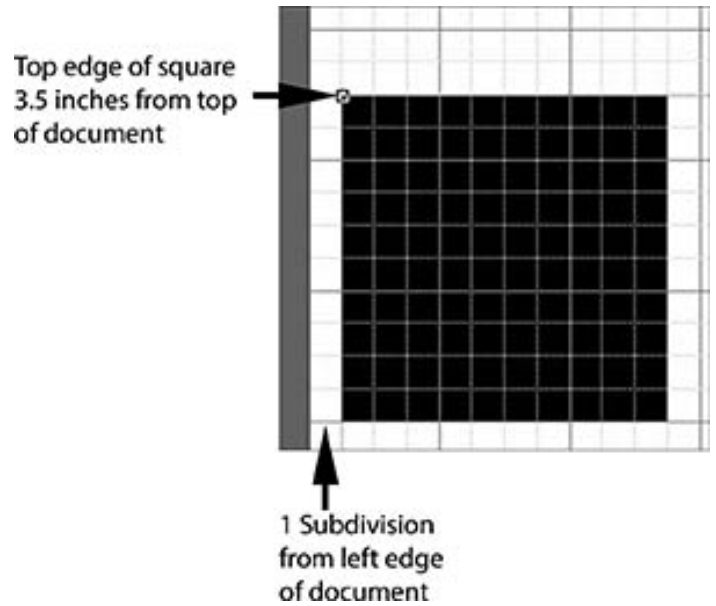
- Create a new 12 x 12 inch document (File > New > Blank File) at 300 ppi with a white background. (Photoshop: Choose File > New.)
- In the Menu Bar, choose View > Grid. (Photoshop: Choose View > Show > Grid.)
- Choose Edit > Preferences > Guides & Grid. (Photoshop: Choose Guides, Grid & Slices.)
- In the dialog box, set the Gridline to every 1 inch and the Subdivisions to 4. Click OK.

Step Two: Create a Square

- Get the Rectangle tool.
- In the Tool Options, click on the New Shape Layer icon. (Photoshop: Set the Tool Mode to Shape and the Path Operations to New Layer.)
- Open the Geometry Options and choose Fixed Size. Set the Width to 2.5 inches and the Height to 2.5 inches.
- On the document, click once to create the shape. (Photoshop: Click and drag slightly to create the shape.)
- In the Menu Bar, choose Layer > Simplify Layer. (Photoshop: Choose Layer > Rasterize > Layer.)

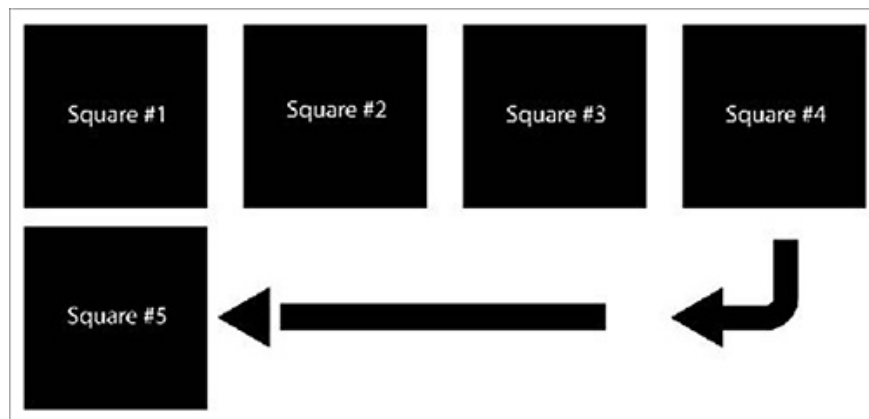
Step Three: Create and Position the First Row of Squares

- Get the Move tool.
- In the Tool Options, check Auto Select Layer and Show Bounding Box. (Photoshop: Check Auto Select and Show Transform Controls.)
- On the document, click on the square and drag it until the top is at the 3.5 inch mark on the Horizontal Gridline and one Subdivision line in from the left edge of the page.
- In the Layers panel, double click on the name of the layer and rename it Square #1.
- On the document, while holding down the Alt key (Mac: Opt key), click on Square #1 and drag to the right to create a new square.
- Position the new square two Subdivisions to the right of the first square.
- In the Layers panel, double click on the name of the new layer and rename it Square #2.
- Repeat the above steps two more times, renaming the layers as Square #3 and Square #4.



Step Four: Create the Second Line of Squares

- On the document, while holding down the Alt key (Mac: Opt key), click on Square #4 and drag to create a new square.
- Position the new square one Subdivision directly below Square #1.
- In the Layers panel, double click on the name of the new layer and rename it Square #5.
- Create three more squares, positioning and renaming as in Step Three.
- Beginning with Square #8, repeat Step Four one more time to create a third row of squares, numbered 9-12.

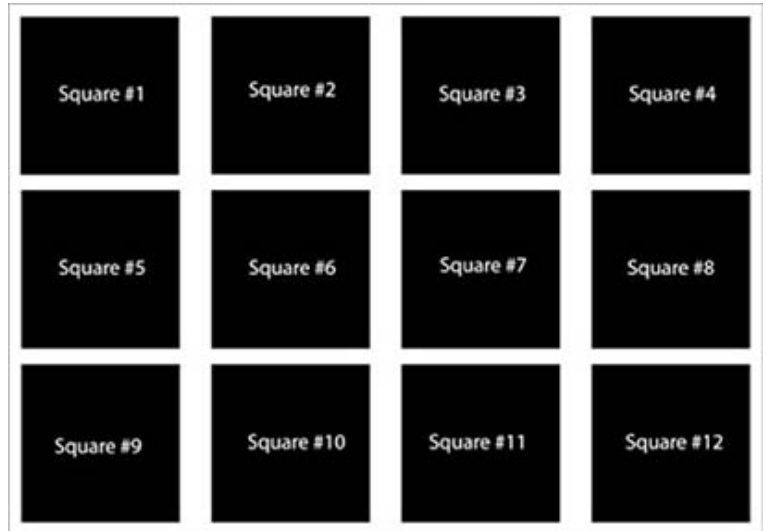


Step Five: Reverse the Layers

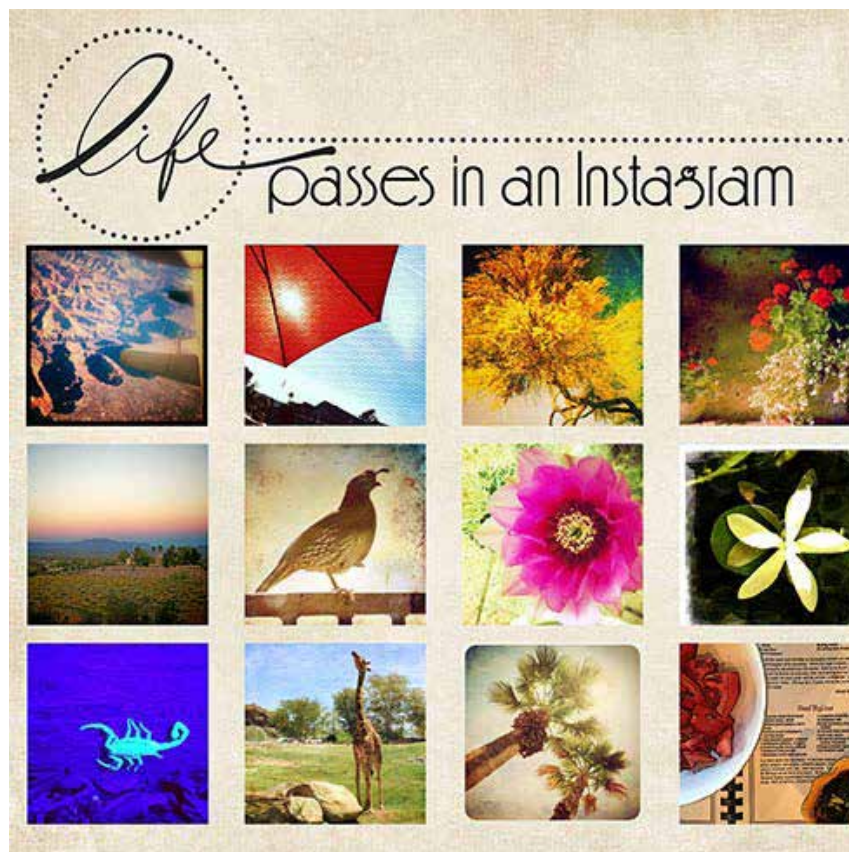
- In the Layers panel, click on the top square and Shift click on the bottom square to activate all the square layers at the same time.
- In the Menu Bar, choose Layer > Arrange > Reverse.

Check it out! In the Layers panel, Square #1 is at the top, and Square #12 is at the bottom. It makes perfect sense to me!

I typed the name and number for each square on the document for illustration only.



And here's the page I made with my lovely Instagram template. I'm sure I'm going to be using it over, and over, and over again!



Credits:

Digi Scrap Tutorial: Reverse Your Template Layers in a Snap by Barb Brookbank

Background paper: Bloomed by Susan Bartolini, from the mini kit included with the Costco CD

Word art, dot target: **Me Personally** by Amanda Taylor

Font: Feena Casual