

# SCRAPPER'S GUIDE

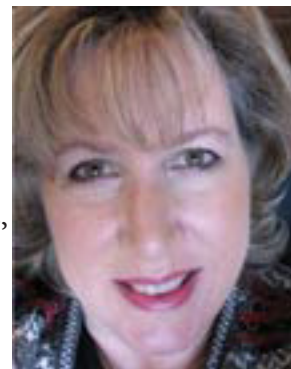
The Easiest Way To Learn Digital Scrapbooking. **Guaranteed.**

## Inked Edges (Photoshop Elements)

Tip of the Week by Sara Horton on August 3, 2009

My neighbor is a demonstrator for a stamp company. When we get together we have so much fun getting inky fingers. We like to brush ink on the edges of our tags, cards and embellishment pieces to give them a decorative edge.

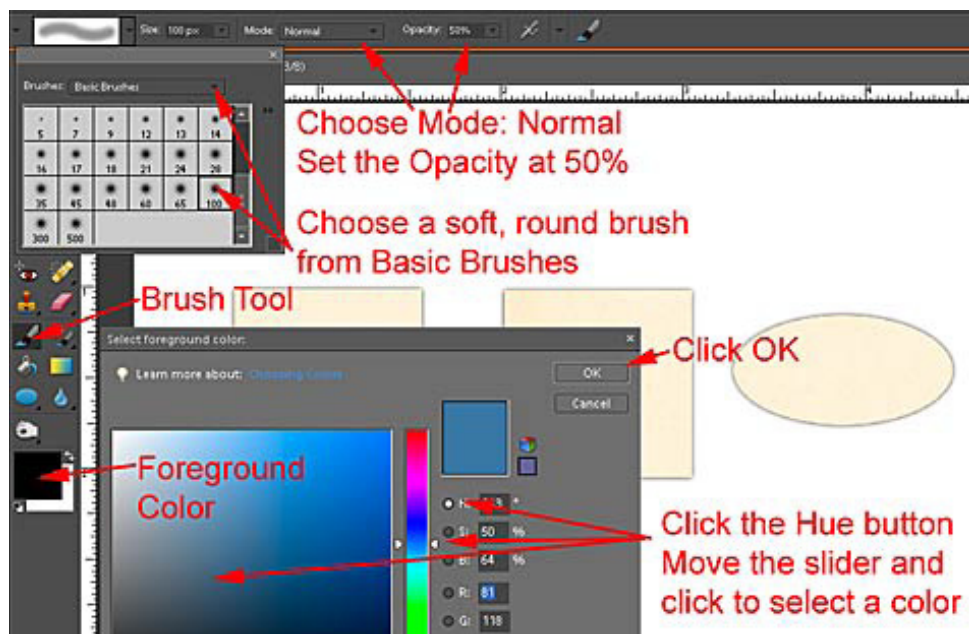
Did you know that the same look can be recreated digitally in just a few easy steps? And the best thing is, your fingers stay clean!



### Method 1: Edges Inked with Color

Open an embellishment or background paper you'd like to ink. For the sample, I've chosen a set of tags.

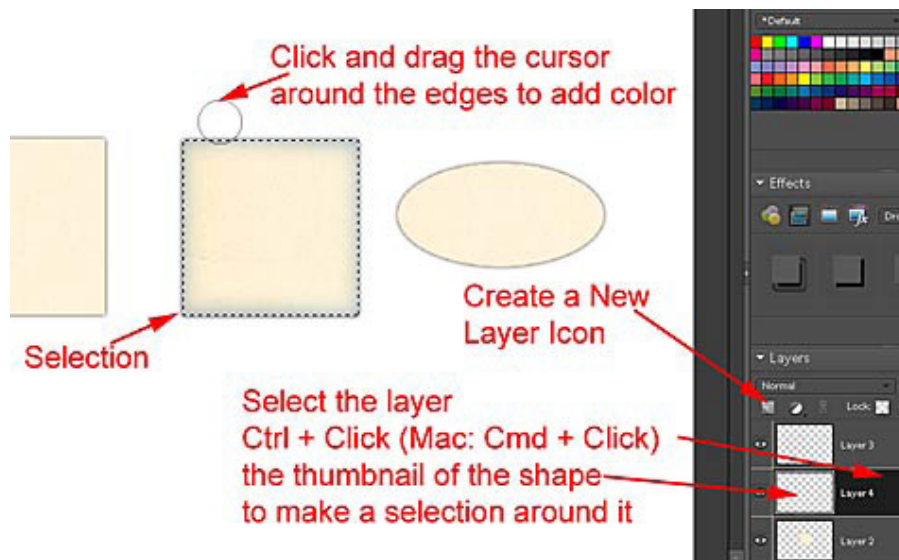
Get the Brush tool, open the Brush Picker menu in the Options Bar, and choose a soft, round brush. For the Mode, choose Normal and reduce the Opacity to 50%. Like with traditional ink, it's easy to start with a little less color and layer it on.



Set the brush color by clicking on the Foreground Color Chip. Check the Hue button and drag the slider to select a color family. Click once in the Color Picker window to choose a color, then click OK.

Select and Ctrl Click (Mac: Cmd Click) on the thumbnail of the layer you will be inking. This places a selection around the object. Make a new transparent layer by clicking the Create a New Layer icon on the Layers palette. Click and drag the cursor around the edges of the selection to add color. Each pass of the cursor

adds more color to the edge.



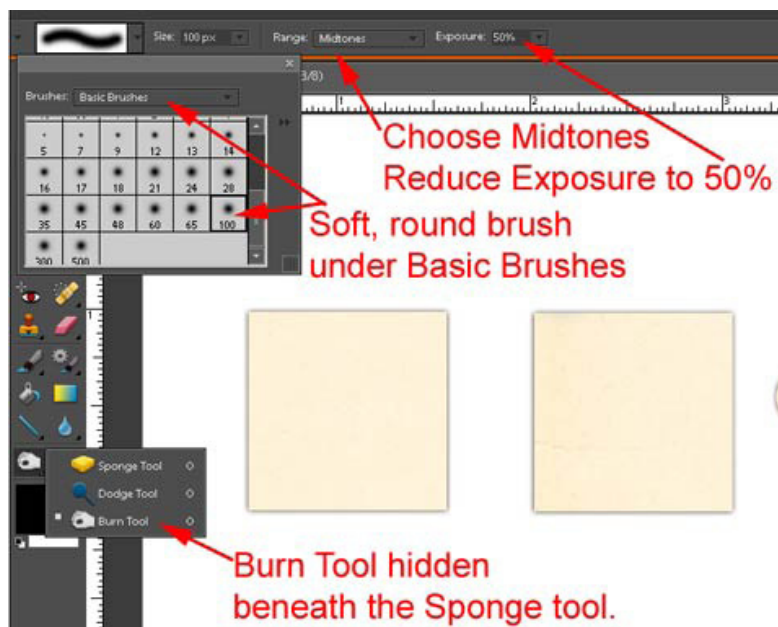
Press Ctrl D (Mac: Cmd D) to remove the selection.

## Method 2: Edges Inked with Digital Watermark Ink

Versamark is a wonderful ink designed to give the appearance of a watermark. It slightly darkens the original color of the paper you are using, giving it depth. Photoshop Elements has a similar tool: the Burn tool.

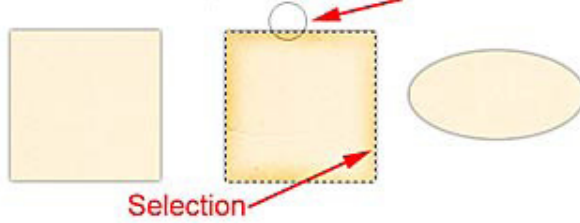
To achieve this look, open an embellishment or background paper with color.

Get the Burn tool which shares a space on the Tool Bar with the Sponge and Dodge tools. Click and hold the Sponge tool to reveal the tools hidden beneath it. Select the Burn tool and choose a soft, round brush from the Color Picker menu in the Options Bar. For the Range, choose Midtones and reduce the Opacity to 50%. You may wish to experiment with changing the Range to Shadows or Highlights. You will achieve different results with different papers, and it's worth seeing the effect each Range produces. For the kraft-colored tags, Midtones and Shadows worked nicely.



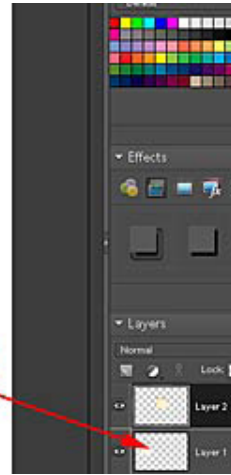
Ctrl Click (Mac: Cmd Click) on the thumbnail of the layer you will be inking. This places a selection around the object. Using a scrubbing motion, click and drag the cursor around the edges of the selection to darken the original color. The color will deepen with each pass of the cursor.

Use a scrubbing motion as you click and drag around the shape to darken the color



Selection

Ctrl + Click (Mac: Cmd + Click) the thumbnail of the shape to place a selection around it.



Press Ctrl D (Mac: Cmd D) to remove the selection.

Credits: page by Sara Horton

Font: Arial

Letter Box Beachcomber kit by Katie Pertiet at Designer Digitals

Number 20 Layered template by Ali Edwards at Designer Digitals



Leap Frog To The Next Level!

Tired of learning a bit here and a bit there? Our CD, Learn Digital Scrapbooking, takes you step-by-step from rank beginner to confident digital scrapbooker in a fraction of the time!

[Find out more and get a free sample video lesson.](#)

If you enjoyed this Tip of the Week, be sure to sign up to receive the **Digital Scrapper Tip of the Week** newsletter.

**Newsletter  
Signup**

For training in more **Advanced Topics** (at rock bottom prices), become a Premier member!

**Premier  
Membership**