



Sketch Effect, Part 2

By Karen Schulz

Create a lovely, soft photo effect on a black and white sketch with the use of color and a masking technique.

For this tutorial you will need:

- Photoshop Elements or Adobe Photoshop
- The dst-Sketch-Effect-Pt2-sketch.psd in the download.
- The dst-Sketch-Effect-Pt2-paper.jpg in the download

Important Links:

- Find this [tutorial on our blog](#).
- [Terms of Use](#)
- Website: www.DigitalScrapper.com
- [Facebook Business Page](#)
- [Facebook Community Group](#)
- [YouTube Channel](#)
- [Instagram](#)
- [Contact Us](#)

©2020 Digital Scrapper

See What Others Are Creating

- Join & visit our [Community on Facebook](#).
- Search and post using hashtag **#DST** and/or **#SketchEffectPt2**

Step 1: Add Color to Your Sketch

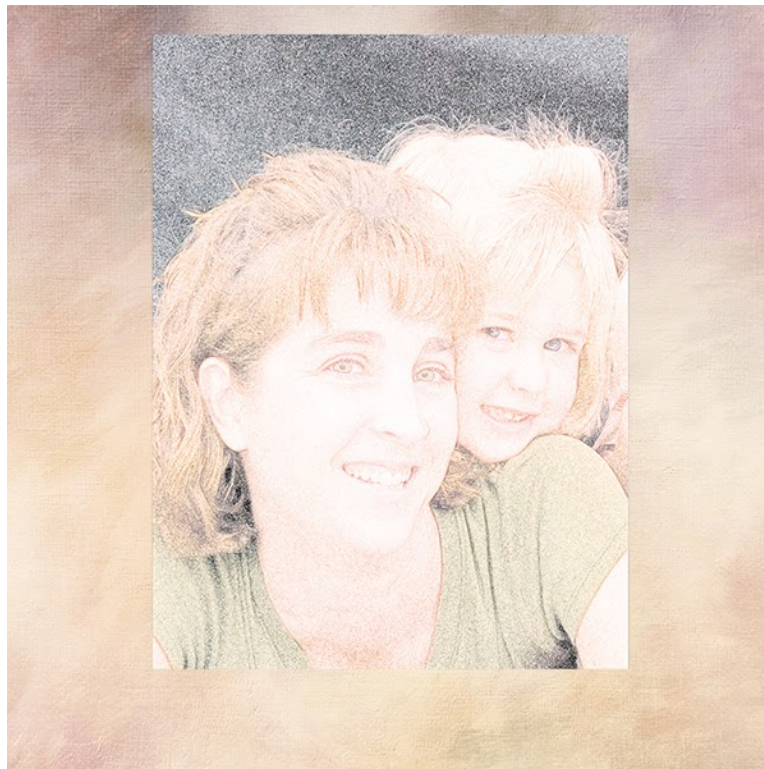
- To follow along exactly, open the sketch (dst-Sketch-Effect-Pt2-sketch.psd) I have provided in the download. You may also use a sketch of your own that you created following the Sketch Effect, Part 1 tutorial instructions.
- In the Layers panel, click and drag the color photo layer to the top of the Layers panel.
- Set the Blend Mode to Color. Lower the Opacity, if desired. For my sketch, I chose to leave the opacity at 100%.



Step 2: Prepare Your Sketch for Your Scrapbook Page

- In the Layers Panel, Right click (Mac: Ctrl click) on any layer and choose Flatten Image.
- Open the dst-Sketch-Effect-Pt2-paper (File > Open) from the downloads.

- Get the Move Tool.
- Click on the colored sketch to activate it and drag it onto the paper document.
- Save your flattened color sketch (File > Save As) as a high-quality JPEG file with a unique name.
- Press Ctrl T (Mac: Cmd T) to get the Transform options.
- On the document, click and drag from a corner handle of the bounding box to change the size of the image, if desired. If you cannot see the bounding box, press Ctrl 0 (Mac: Cmd 0).
- Click and drag inside the bounding box to reposition the photo, if desired.
- Click the checkmark to commit.



Step 3: Add a Mask and Soften the Edges of Your Sketch

- Get the Brush tool.
 - **Photoshop Elements Only:** In the Tool Options, open the Brush Picker, open the dropdown menu, and choose Default Brushes. Choose a Soft Round brush. Set the Size to 400px, the Opacity to 75% and the Mode to Normal. Click on Brush Settings. Set the Fade to 0, the Hue Jitter to 0, the Scatter to 0, the Spacing to 25%, the Hardness to 0, and the Roundness to 100%.
 - **Adobe Photoshop Only:** In the Tool Options, open the Brush Picker, open the General Brushes, and choose the Soft Round brush. Set the Size to 400px and the Hardness to 0%. Click on the Brush Setting icon to toggle open the Brush Settings panel. In the Brush Settings panel, set the

Spacing to 25% and uncheck all Brush Tip Shape settings. In the Tool Options, click on the Brush Settings icon to toggle it closed.

- In the Layers panel, click on the color sketch layer to confirm that it's active.
- In the Layers panel, click on the Add Layer Mask icon.
- Black should be the foreground color chip. If it's not, press the letter X.
- In the Layers panel, click on the layer mask to make sure it's active.
- On the document click and drag around the edges of your sketch to mask away areas that you want to remove.

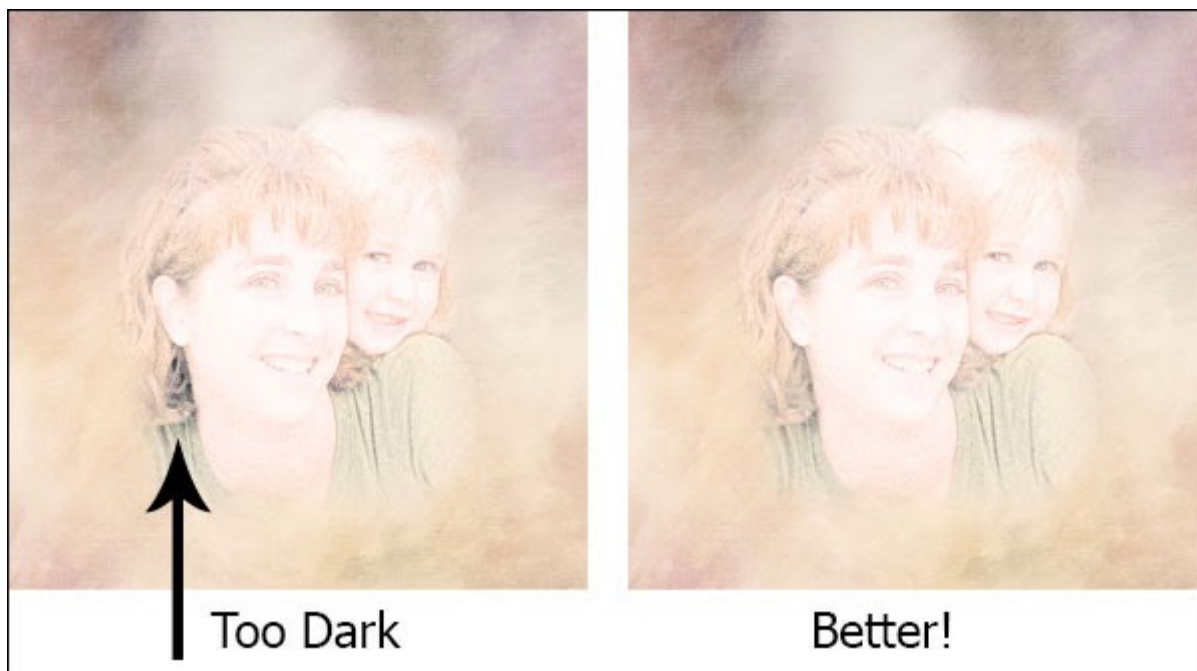
Note: You will want to make sure and mask away all the harsh edges of the photo.

- As you drag around your sketch, you may need to resize your brush to get into small areas. To change the size of the brush, press the Left or Right Bracket key.

Note: If you make a mistake, press the letter X to switch the Color Chips. This will make the Foreground color white. Brush on your sketch to bring back the parts of the sketch that you accidentally brushed away. When you have corrected your mistake, press the letter X to make black the foreground color again. Brushing with black, continue working on your mask to brush away unwanted areas.

- If there is an area on your sketch that is too dark, in the Tool Options, lower the opacity of your brush to 50% and click on the dark area.





Note: To learn more about layer masks, [watch this FREE video](#).

Step 4: Create Your Scrapbook Page

- Embellish your scrapbook page as desired.
- Save your scrapbook page (File > Save As) as a high-quality JPEG file with a unique name.
- Save the document (File > Save As) as a layered PSD file with a unique name.

This is a scrapbook page that I created with my colored sketch.



Credits:

Word art: Mothers and Daughters Word Art by Karen Schulz
Embellishments: Mothers and Daughters Kit by Karen Schulz
Paper: Mothers and Daughters Kit, Paper 28, by Karen Schulz
Font (names/date): Candara Regular
Photo and Sketch: Karen Schulz

Discover designer secrets for the artistic creation of complex masks with [Brushability: Making Masks](#) by Syndee Rogers. **Use Coupon Code BRM25** at checkout to save 25%* off the full price of the class.

*Cannot be combined with any other discount.

