

## dst-animated-layouts-manual



## Animated Layouts

by Jen White

Have something on your scrapbook page that was meant to sparkle or blink? Add this blinky animation technique to any online image, whether it's in a gallery or in an email.

### For this tutorial, you will need:

- Adobe Photoshop or Photoshop Elements
- Something to make blinky, like
  - a scrapbook page with a Christmas tree on it.
  - a greeting card with a Christmas tree on it.
  - any document that contains something that would look good sparkly.

### Step One: Save a Web Copy

- If you're starting with a layered document, first, create a web copy of the document.

Note: If you'd like to practice on the page I'm using, you can skip this step.

- Watch our video for [How to Save for Web](#).



### Step Two: Add a Blinky Layer

- Open the web copy you saved in the last step. If you'd like to use the page I'm using, open it from the download folder.
- Press the letter D to reset the Color Chips to the default of black over white.
- Press Ctrl J (Mac: Cmd J) to create a duplicate of the Background layer.
- In the Layers panel, double click directly on the name of the new layer and rename it "BLINK."

### Step Three: Add a Contrast Layer

- In the Layers panel, click on the Create a New Layer icon.
- Double click directly on the name of the new layer and rename it "CONTRAST."
- Get the Brush tool.
  - **Photoshop Elements:** In the Tool Options, open the Brush Picker, open the

dropdown menu, and choose Default Brushes. Choose any Soft Round brush. Set the Opacity to 100 and the Mode to Normal.

- **Adobe Photoshop:** In the Tool Options, open the Brush Picker, open the General Brushes, and choose the Soft Round brush. Set the Mode to Normal, the Opacity to 100, the Flow to 100, and the Smoothing to 0.
- Press Ctrl + (Mac: Cmd +) to zoom into an area you want to add contrast to. To reposition the zoom, hold down the Space bar and click and drag on your document.
- On the document, hover your cursor over an area you want to add contrast to, such as a light from a Christmas tree.
- Press the Right or Left Bracket key to adjust the size of your brush to match the object. I set my brush to 54 px.
- Click once on your document. Do not click and drag.
- (optional) Repeat clicking in a few more places to add additional contrast.

In my example, I clicked on all the red lights.



- In the Layers panel, change the Blend Mode to Overlay.

### Test Your Results

- To test the Contrast layer, click on the Visibility icon of the Contrast layer to toggle it on and off several times.



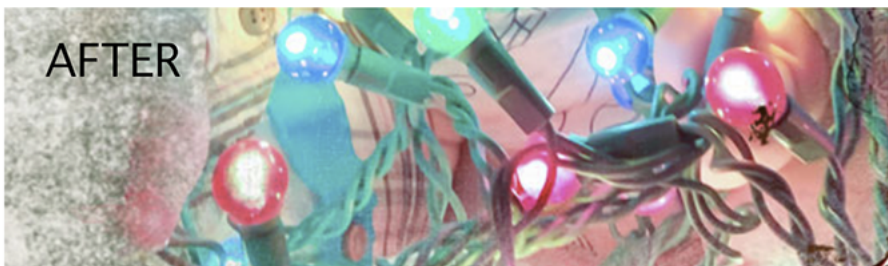
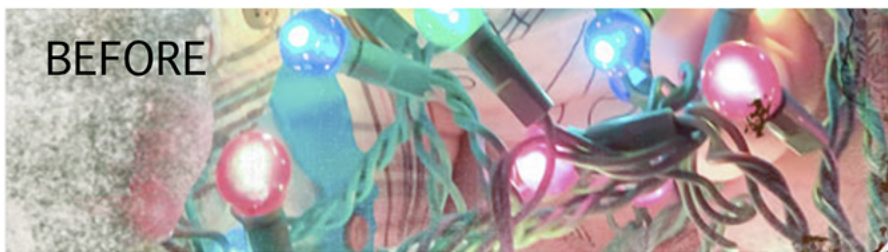
The Contrast should be subtle, but noticeable.

- If it's too much, lower the Opacity of the Contrast layer.
- If it's not enough,
  - Press Ctrl J (Mac: Cmd J) to duplicate the contrast layer.
  - Press Ctrl E (Mac: Cmd E) to merge the two contrast layers.

### Options to Try

Brushing with black and changing the Blend Mode to Overlay worked well for my image. If this does not work for your image, Here are some things to try:

1. Brush with white instead of black. To do that, press the letter X to make white the foreground color before brushing.
2. Try all the Blend Modes to see what works with your colors/image.
3. Try brushing in different colors, like yellow or blue. To do that, before brushing, click on the Foreground Color Chip, choose a color, and click OK.



### Step Four: Merge the Blinky and Contrast Layers

When you're satisfied with the contrast,

- In the Layers panel, there should be one Contrast layer. It should be active and visible.
- Press Ctrl E (Mac: Cmd E) to merge the Contrast layer with the Blinky layer.

There should now be two layers in the Layers panel, the Background layer and a Blinky layer.

### (Optional) Step Five: Create Additional Alternating Blink Layers

- In the Layers panel, click on the Background layer to activate it.
- Create an additional blinky layer as instructed above.
- Click and drag the new Blink layer to the top of the Layers panel.
- Create a contrast layer as instructed above, but this time click on different parts of the image. I will click on the blue lights instead of the red ones.
- Merge the second Contrast layer with the second Blink as instructed above.
- Press Ctrl 0 (Mac: Cmd 0) to zoom back out.

I now have one Background layer and two Blink layers in my Layers panel.

NOTE: You can add as many Blink layers as you want by following Step Five, but GIF files do have a size limit, so you won't be able to add a gazillion.

### **(Photoshop Elements Only) Step Six: Create a GIF File**

(Adobe Photoshop instructions are below the image.)

- Press Shift Ctrl Alt S (Mac: Shift Cmd Opt S) to open the Save for Web dialog box.
- In the dialog box, set the Preset to GIF 128 Dithered.
- Place a checkmark next to Animate. Set the Animation Looping Options to Forever and the Frame Delay to 0.5.
- To see your animation, click on the Play Animation icon.
- Click Save. Save the blinky web-sized image with a unique name in an easy to find location, such as your computer's desktop.

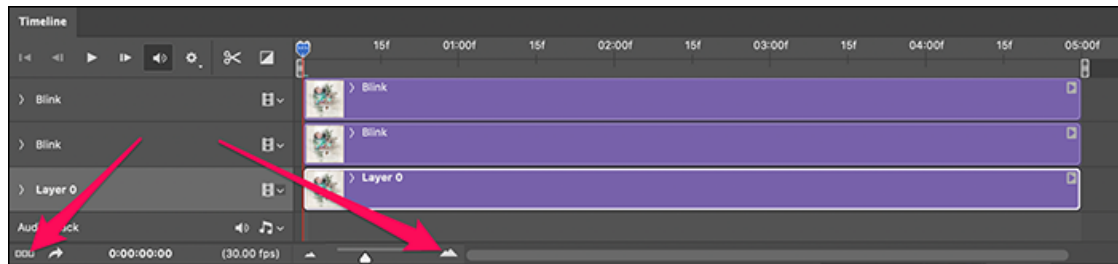


### **(Adobe Photoshop Only) Step Six: Create a GIF File**

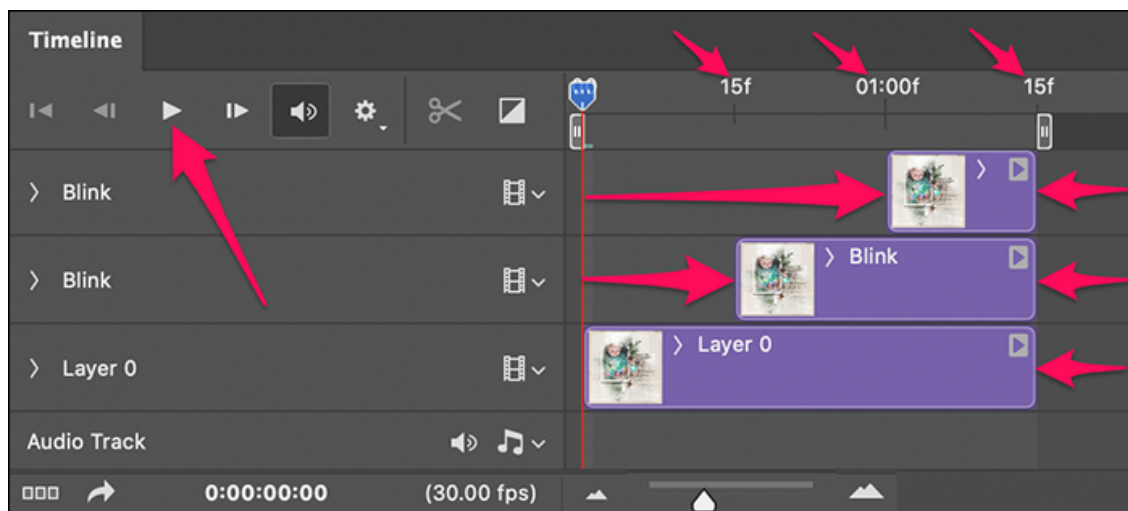
- In the Layers panel, Right click (Mac: Ctrl click) on the Background layer and choose Layer from Background. Click OK.
- In the Timeline panel (Window > Timeline), click on the dropdown arrow and choose Create Frame Animation. Then, click on the Create Frame Animation button.
- Click on the Video Timeline icon and click 7 times on the Zoom icon. See the image below.

NOTE: The zoom goal is to be able to clearly see the different stops (15f, 01:00f, 15f, 02:00f).

NOTE: To undock the Timeline panel, click and drag down on the tab and then back up.



- For the top Blink frame:
  - Click and drag the left edge 01:00 marker.
  - Click and drag the right edge to the second 15f marker.
- For the middle Blink frame:
  - Click and drag the left edge to the first 15f marker.
  - Click and drag the right edge to the second 15f marker.
- For the Layer 0 frame:
  - Click and drag the right edge to the second 15f marker.
- Reference the image below. Make sure the right edge of all frames is aligned.
- To test the animation, click on the Play icon. It will only play through one time.



NOTE: If you have more than 3 frames, continue staggering them every 15 frames (f) and move the right edge back accordingly.

- Press Shift Ctrl Alt S (Mac: Shift Cmd Opt S) to open the Save for Web dialog box.
- In the dialog box, set the Preset to GIF 128 Dithered. Set the Animation Looping Options to Forever.
- To see your animation, click on the Play Animation icon.



- Click Save. Save the blinky web-sized image with a unique name in an easy to find location, such as your computer's desktop.



Page & Photo: Lights by Jen White  
Kit: Holiday Spirit by Tiramisu Designs  
Font: Charter