



Paper Banner

By Carla Shute

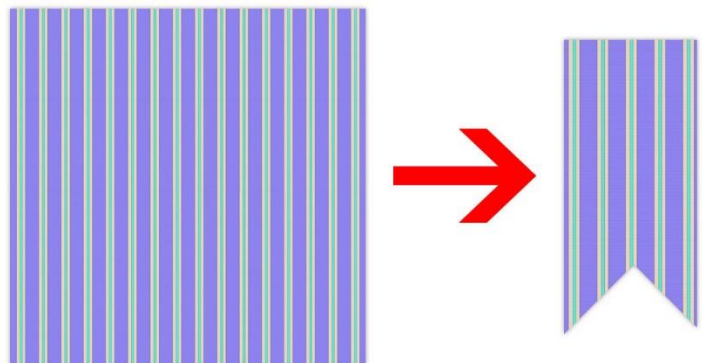
Create a paper banner using the Rectangular Marquee tool and a pretty paper without adding bulk to the file size of your finished page.

For this tutorial you will need:

- The paper-dst-paper-banner.jpg from the download or a paper from your stash
- Adobe Photoshop or Photoshop Elements

Important Links:

- Find this [tutorial on our blog](#).
- [Terms of Use](#)
- [Website: www.DigitalScrapper.com](http://www.DigitalScrapper.com)
- [Facebook Business Page](#)
- [Circle Community Group](#)
- [YouTube Channel](#)
- [Instagram](#)
- [Contact Us](#)

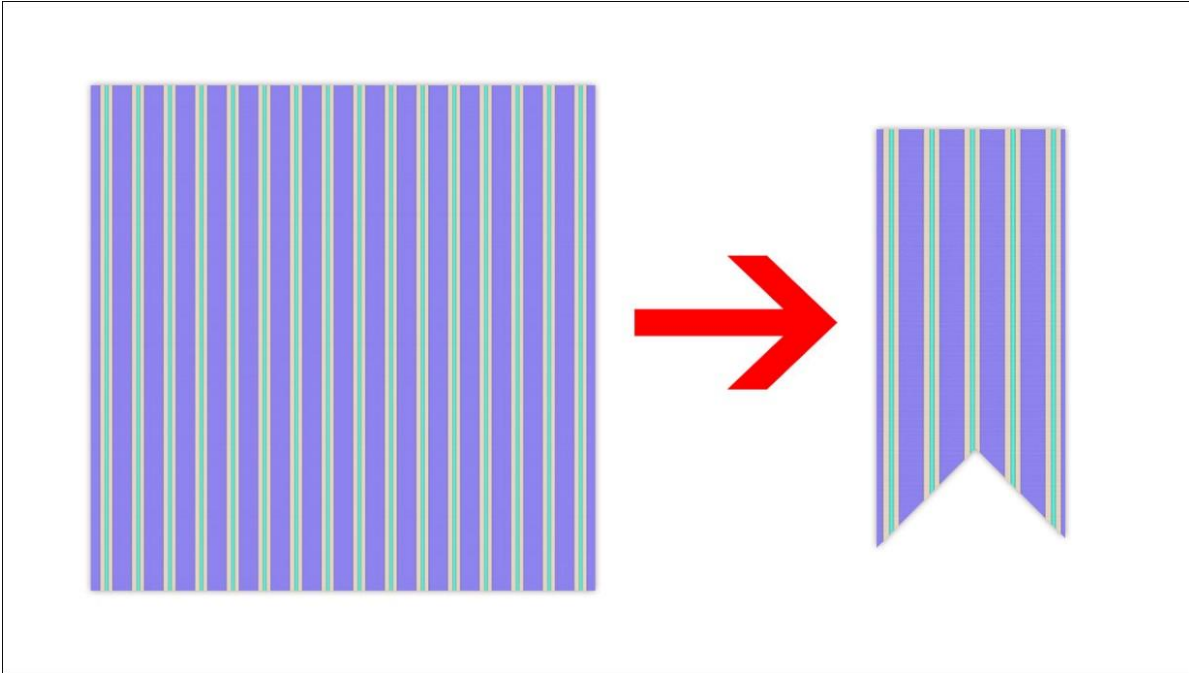


©2023 Digital Scrapper

See What Others Are Creating

- [Join & visit our Community on Circle.](#)

Here is a preview of what we'll be creating together. We will create a paper banner from a paper, while keeping your file size low.



How to Choose a Good Paper

- Solid papers that coordinate with a color in your photo are a good choice.
- Lightly patterned papers that coordinate with the colors in your photo are a good choice.
- Large, busy, or multicolored papers are not a good choice because they will distract from your photo instead of complementing it.



Step One: Prepare the Workspace

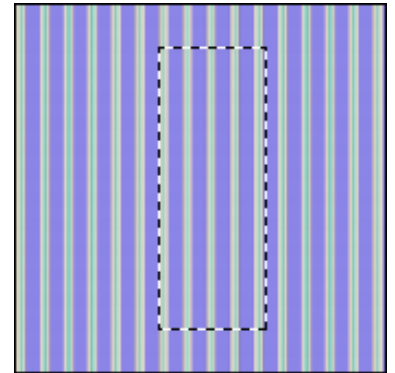
- Create a new 12 x 12 inch document (File > New > Blank File) at 300 ppi with a white background. (PS: Choose File > New.)
- Open either a paper you would like to use from your stash, or the paper-dst-paper-banner.jpg file (File > Open) from the downloads.

NOTE: Do NOT add the paper to the new document.

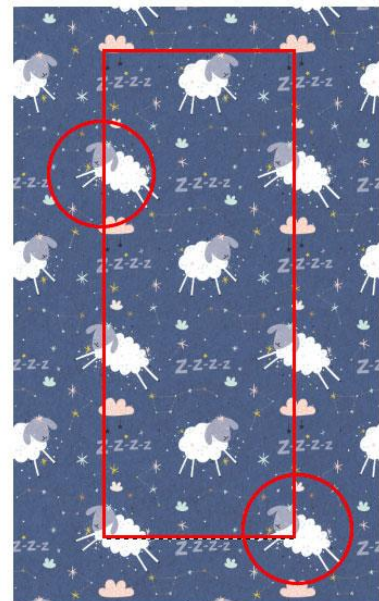
- Press the letter D to reset the Color Chips to the default of black over white.

Step Two: Create a Rectangular Selection

- Get the Rectangular Marquee tool.
- In the Tool Options, click on the New Selection icon. Set the Feather to 0 and the Aspect to Fixed Sized. (PS: Set the Style to Fixed Size.) Set the Width to 3.5 inches and the Height to 9 inches.
- On the paper document, not the new document, click and drag over the area you would like to select for your banner.
- To reposition, click and drag inside the selection.



NOTE: When choosing an area to select on a patterned paper, be careful where the edges of the selection fall. In the example below, we don't want to cut the heads off the sheep or have just the head of a sheep peeking in.



- Get the Move tool.
- On the document, click inside the selection and drag the selection into the middle of the new document.

NOTE: Because we are only adding a selection of the paper, instead of the whole paper, our finished page file size will be smaller.

Step Three: Create a Square Selection

- Get the Rectangular Marquee tool.
- In the Tool Options, click on the New Selection icon. Set the Feather to 0 and the Aspect to Fixed Sized. (PS: Set the Style to Fixed Size.) Set the Width to 3.75 inches and the Height to 3.75 inches.

NOTE: The Width of the square selection should be slightly larger than the width of the paper strip.

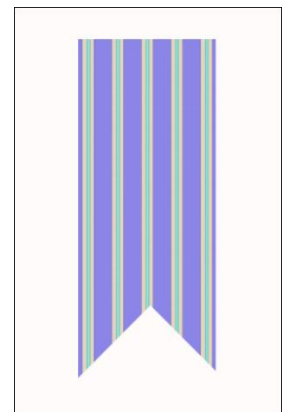
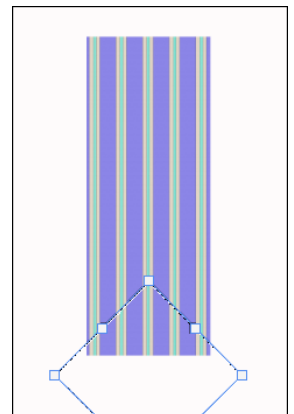
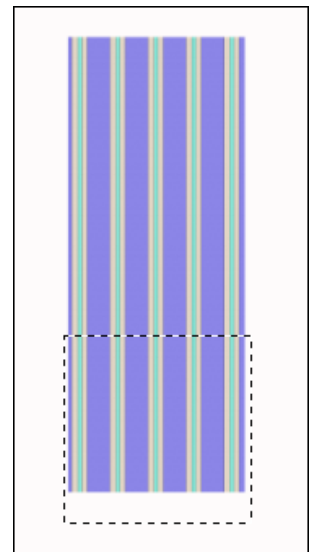
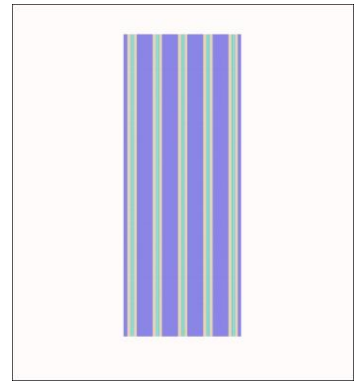
- On the document, click and drag a square near the bottom of your rectangular paper.

Step Four: Create the Banner

- In the Layers panel, the top layer should still be active. If it is not, click on the top layer to activate it.
- In the Menu Bar, choose Select > Transform Selection.
- In the Tool Options, set the Angle to 45°. (PS: Set the Rotate to 45°.)
- Click inside the square and drag the square down toward the bottom of your rectangular shape, making sure the square completely covers the bottom corners of the rectangular shape.
- Click the checkmark to commit the change.
- Get the Move tool.
- In the Tool Options, click on the Align Horizontal Centers icon.
- Press the Backspace key (Mac: Delete key) to delete the selected area of the paper.
- Press Ctrl D (Mac: Cmd D) to deselect.

Step Five: Add a Shadow and Finish Your Page

- In the Layers panel, the rectangular layer should be active. If it is not, click on it to make it active.
- **Photoshop Elements Only:**
 - In the Menu Bar, choose Layer > Layer Style > Style Settings.
 - In the dialog box, set the Lighting Angle to 120°.
 - Click directly on the words Drop Shadow to open the settings.
 - Set the Size to 8, the Distance to 13, and the Opacity to 50.
 - Click OK to close the Style Settings dialog box.



- **Adobe Photoshop Only:**

- In the Menu Bar, choose Layer > Layer Style > Drop Shadow.
- In the dialog box, click on Reset to Default.
- Set the Blend Mode to Multiply, the Opacity to 50%, the Angle to 120°, the Distance to 13, the Spread to 0, and the Size to 8.
- Click OK to close the Layer Style dialog box.
- Add background papers, photos, embellishments, and journaling to finish your page as desired.

Here is a page I created of my daughter falling asleep in her highchair during a snack! The paper banner behind the photo helps draw the eye to my photo and the pattern reenforces the sleepy feel of the photo.



Page & Photo: Carla Shute
Tutorial: Paper Banner by Carla Shute
Kits: Sleepyhead and In This Moment by KimB Designs
Font: Arcon

Credits for Sample papers:

Once Upon a Winter and With You by Anita Designs

Serendipity by Angie Briggs

Sleepyhead by KimB Designs