



Color Story

Lesson 8: Art-Inspired Template (Photoshop Elements)

In this lesson, we'll create our own art-inspired template using the Rectangle tool and primary colors.

© Syndee Rogers

[Terms of Use](#)

Mini Art History Lesson

The template we are going to create is inspired by the 20th-century artist Piet Mondrian. He created a range of different art styles but was considered to be one of the pioneers of abstract art.



Piet Mondrian
1872-1944

He changed his artistic direction from figurative paintings to a more abstract style.



Kleines Haus in der Sonne -1909

Other Art by Mondrian

Rij bomen langs het Gein -1905
(Row of Trees Along the Gein)



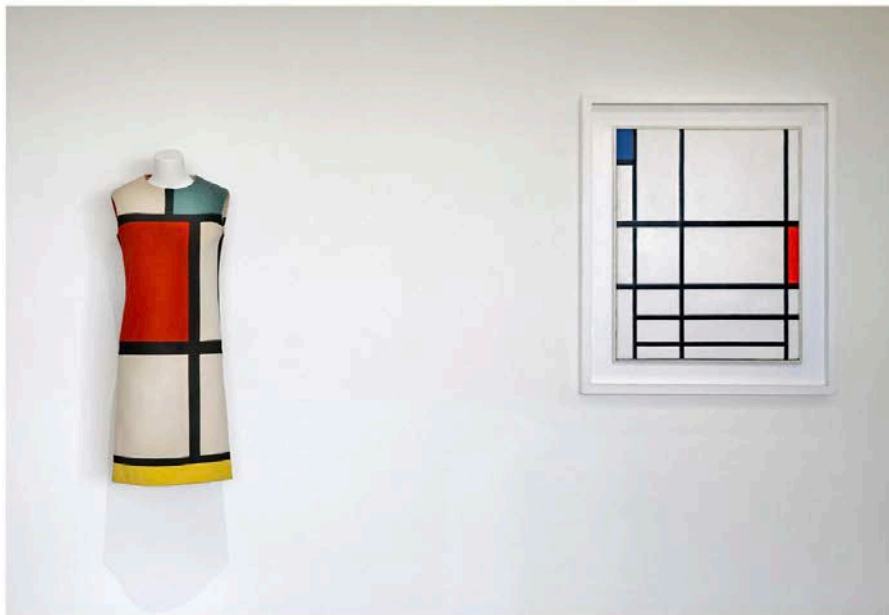
White Irises
1909-1910

He eventually limited his use of colors to the primary colors of red, blue, and yellow, plus black and white. He became renowned for his grid-style paintings.



Fashion Designer Yves Saint Laurent's Fall 1965 collection was inspired by Mondrian's grid style artwork.

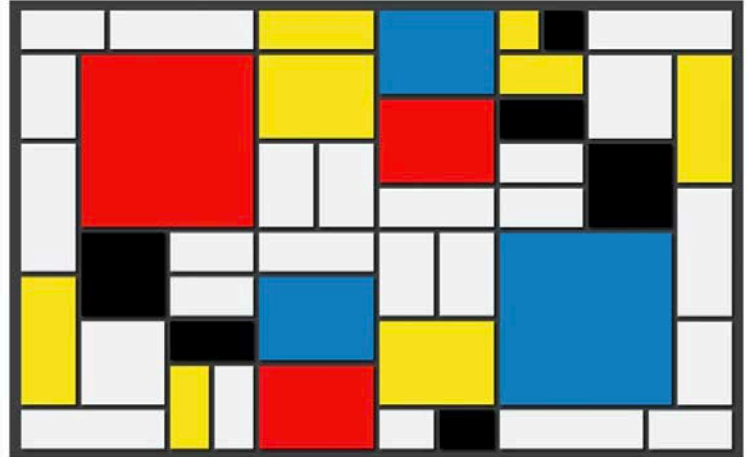
Piet Mondrian Dress by Yves Saint Laurent (1965)



City of Paris Museum of Modern Art
(Musée d'Art Moderne de Paris)

The Partridge Family show from the 1970s featured a tour bus that was painted to resemble a Mondrian painting.

The Partridge Family show (1970-1974)



The paint job was inspired by Mondrian's Composizione (1921)

This art style continues to influence and inspire the design of art, products, and even buildings.

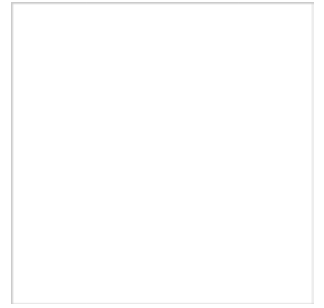


Buildings inspired by Mondrian



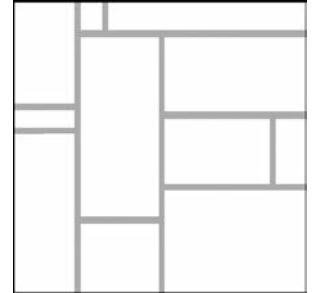
Set Up the Workspace

- Begin in Advanced/Expert Mode of Photoshop Elements.
- Create a new 12x12 inch document (File > New > Blank File) at 300 ppi with a white background.
- Press the letter D to reset the Color Chips to the default of black and white.



Use a Reference Image (Optional)

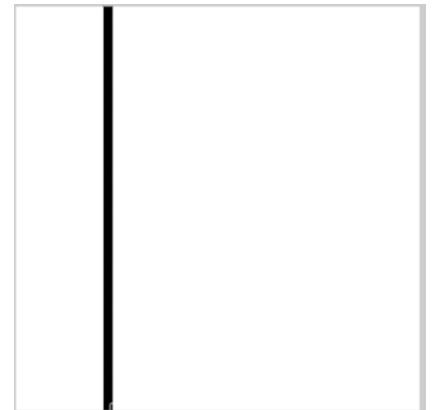
- Open the CLR-L8-Template-Reference.jpg (File > Open) from the CLR-Class-Files folder.
- Holding down the Shift key, click and drag the template reference document over to the new document.
- In the Layers panel, click on the Lock icon to lock the template reference layer.



Create the Overlay

- Get the Rectangle tool.
- In the Tool Options, open the Geometry Options and choose Unconstrained, uncheck From Center and Snap, and click on the Create New Shape Layer icon.

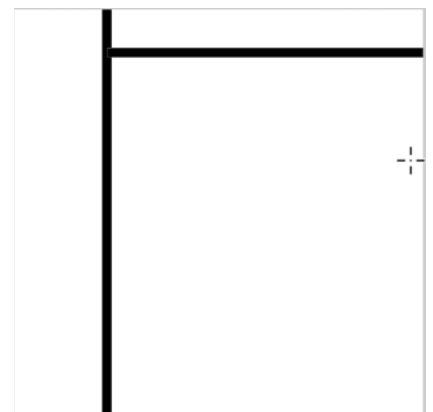
- Starting at the top of the document, about 2 1/4 inches from the left side, click and drag a thin rectangular shape from the top to the bottom edge.



NOTE: I will be referring to these as lines instead of shapes for the rest of the lesson.

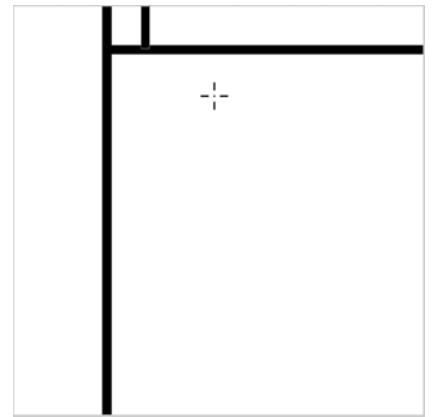
We want our lines to vary in width, somewhere between .23 and .31 inches. If you are using the reference image, then you can use that as a guide. Your lines do not have to be the same as mine.

- Starting from the previous vertical line, about an inch from the top of the document, click and drag a horizontal line to the right edge. My line is a bit thinner than the previous line.

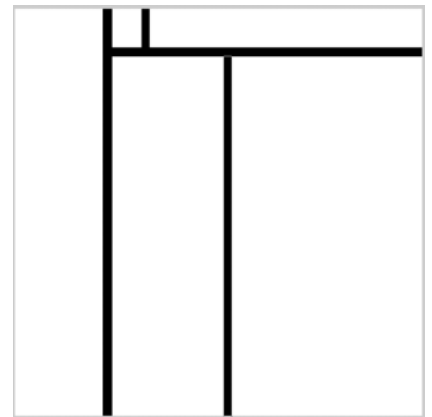


NOTE: Keep in mind that we want our lines to connect, so make sure there are no spaces between the connecting lines.

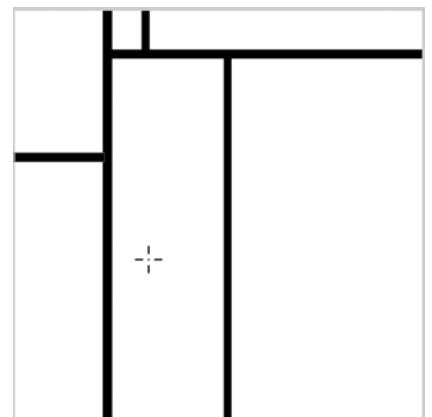
- Starting at the top of the document, about 3/4 of an inch to the right of the previous vertical line, click and drag a vertical line down to the horizontal line.



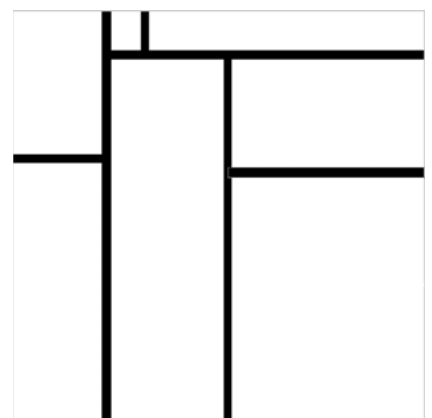
- Move about 3 1/4 inches to the right of the first vertical line, and click and drag another vertical line to the bottom of the document.



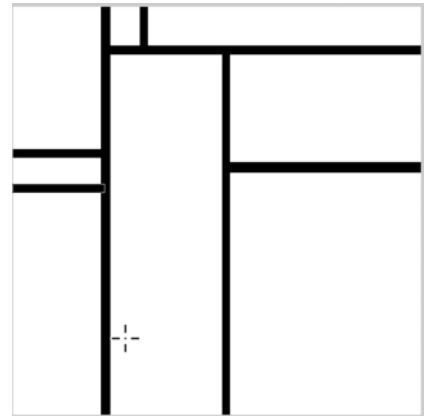
- Move to the left side of the first vertical line, about 4 inches from the top of the document, and click and drag a short horizontal line to the left edge.



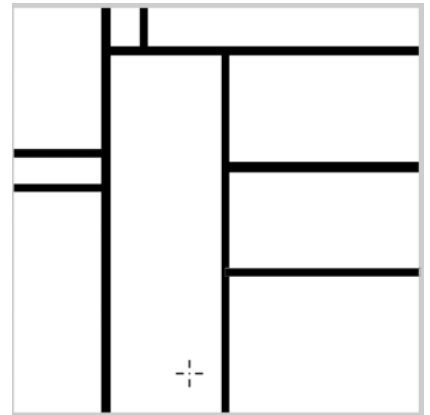
- Move back over to the horizontal line in the middle of the document, and a bit further down than the previous horizontal line, click and drag a horizontal line to the right edge. Remember to vary the thickness of your lines.



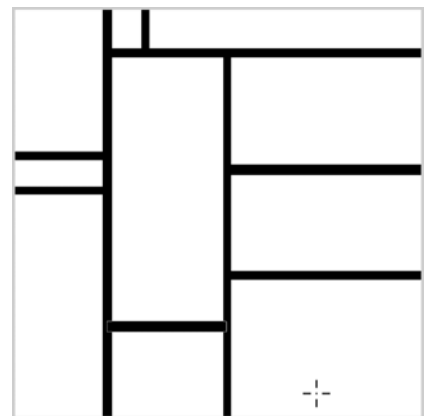
- Move over to the short horizontal line on the left side of the document, and click and drag another short horizontal line about 3/4 of an inch below the first line.



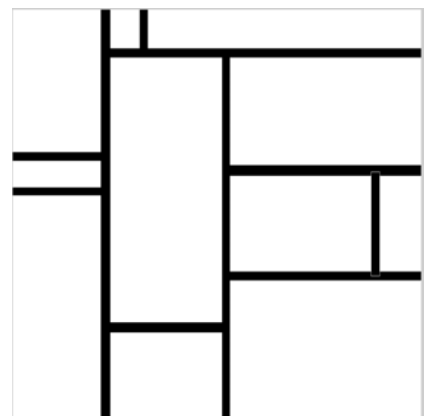
- Starting at the horizontal line in the middle of the document, about 4 1/4 inches from the bottom edge, click and drag a line to the right edge of the document.



- Click and drag a short horizontal line between the two long vertical lines, about 2 3/4 inches from the bottom of the document.



- About an inch from the right edge of the document, click and drag a short vertical line between the two horizontal lines on the middle-right side of the document.



Group the Line Layers

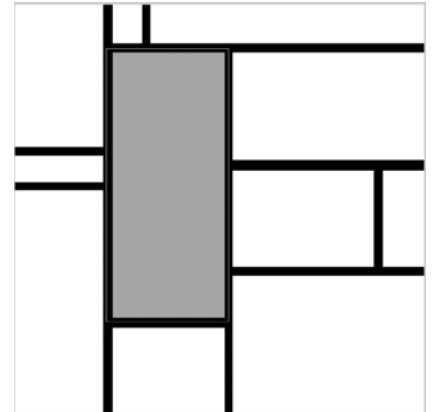
- In the Layers panel, activate the shape layer at the bottom of the layers. Holding down the Shift key, click on the shape layer at the top of the layers so all the line layers are active, then click on the Create a New Group icon.
- Double-click on the name of the group and rename it Master. Press Enter/Return to commit the change.

Merge the Shape Layers

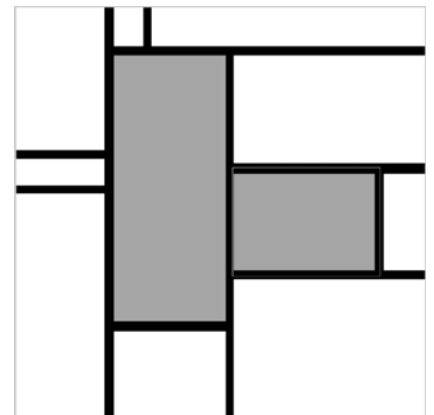
- Press Ctrl J (Mac: Cmd J) to duplicate the group.
- Click on the arrow on the left side of the duplicate group to open it.
- Activate the layer at the top of the group. Holding down the Shift key, click on the Shape layer at the bottom of the layers so all the shape layers are active.
- In the Menu Bar, choose Layer > Merge Shapes.
- In the Layers panel, double-click on the name of the merged layer and rename it Overlay. Press Enter/Return to commit the change.
- Right click (Mac: Ctrl click) on the duplicate group and choose Ungroup Layers.
- Click on the Visibility icon of the Master group to hide it.
- Activate the Master group in the Layers panel.

Create Photo Masks

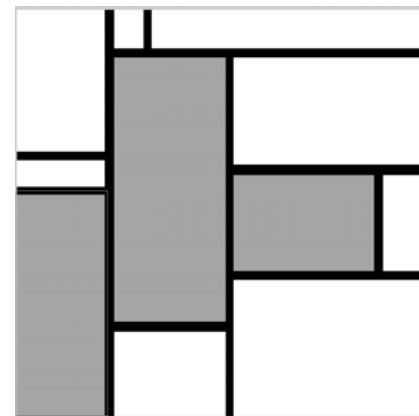
- Click on the Foreground Color Chip and choose a medium grey in the Color Picker. Click OK.
- On the document, click and drag a rectangular shape to fill the long vertical space in the center of the overlay.
- In the Layers panel, double-click on the name of the shape layer and rename it Photo mask 1. Press Enter/Return to commit the change.



- On the document, click and drag a horizontal shape to fill the shorter horizontal space to the right of our previous shape.
- In the Layers panel, double-click on the name of the shape layer and rename it Photo mask 2. Press Enter/Return to commit the change.



- On the document, click and drag a rectangular shape to fill the vertical space at the bottom-left side of the document.
- In the Layers panel, double-click on the name of the shape layer and rename it Photo mask 3. Press Enter/Return to commit the change.
- Activate the Master group in the Layers panel.

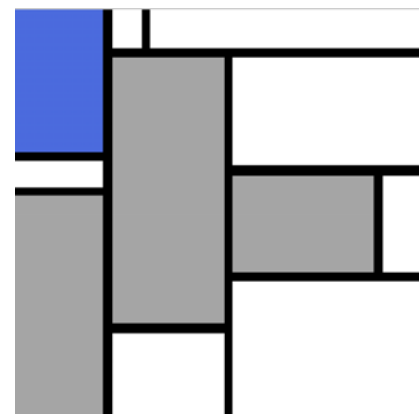


Create Primary Color Masks

Create colored masks that can be used to add patterns or clip papers.

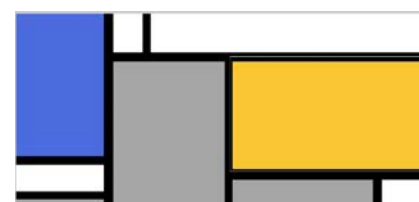
NOTE: I did not name the colored mask layers in the video because I was demonstrating multiple ways to use them. Please name the layers something that is helpful to you personally. I would suggest 'Mask' or Color/Pattern Mask' followed by sequential numbers.

- In the Color Swatches panel, scroll down and choose the Primary Blue Warm swatch from the class swatches (CLR-Class-Swatches).
- Move to the top-left side of the document, and click and drag a blue rectangular shape to fill the vertical space.

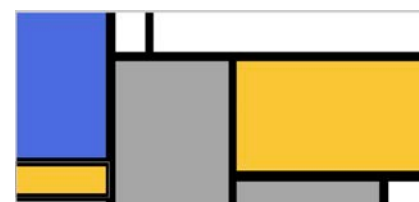


- In the Color Swatches panel, scroll down and choose the Primary Yellow Warm swatch from the class swatches.
- Activate the Master group in the Layers panel.

- On the document, move over to the rectangular space that sits to the right of Photo Mask 1 and above Photo mask 2. Click and drag a yellow rectangular shape to fill the space.



- Move over to the blue shape on the left side of the document, and click and drag a yellow shape to fill the short rectangular space.



- Activate the Master group in the Layers panel.
- In the Color Swatches panel, scroll down and choose the Primary Red Warm swatch from the class swatches.

On the document, click and drag a red rectangular shape to fill the space at the bottom-right of the document.

Recolor the Masks

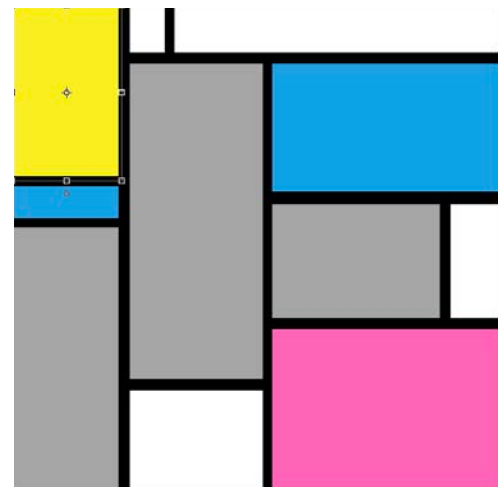
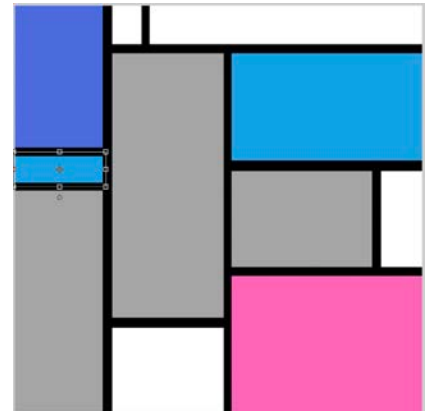
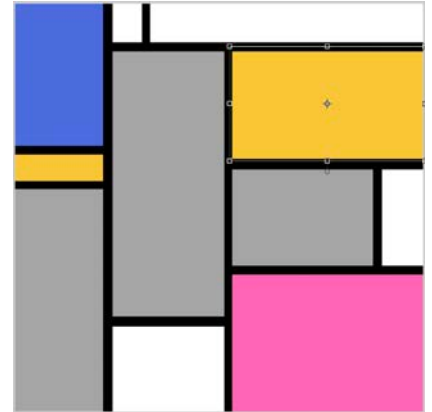
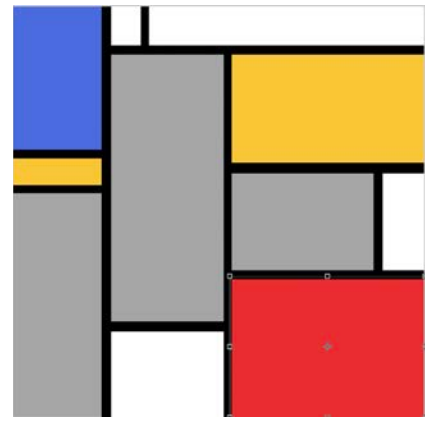
Mix it up a bit and change the colors to the CMYK primaries!

NOTE: You can follow along or just leave your template as is.

- With the red shape layer still active, double-click on the thumbnail in the Layers panel to open the Color Picker.
- In the Color Swatches panel, choose one of the Primary Magenta Cool swatches from the class swatches. Click OK in the Color Picker.

- Activate one of the yellow shape layers in the Layers panel.
- Double-click on the thumbnail of the yellow shape layer to open the Color Picker.
- In the Color Swatches panel, choose the Primary Cyan Cool swatch from the class swatches. Click OK in the Color Picker.
- Activate the small yellow shape in the Layers panel.
- Double-click on the thumbnail of the yellow shape layer to open the Color Picker.
- In the Color Swatches panel, choose the Primary Cyan Cool swatch from the class swatches. Click OK in the Color Picker.

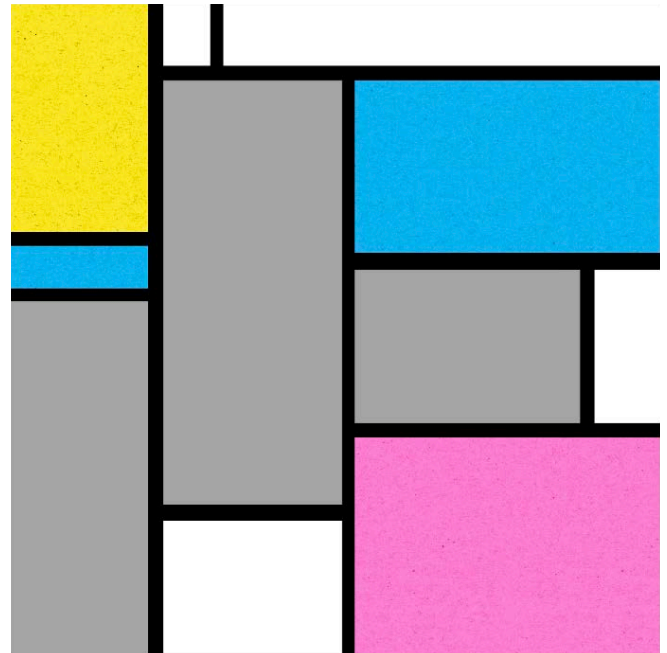
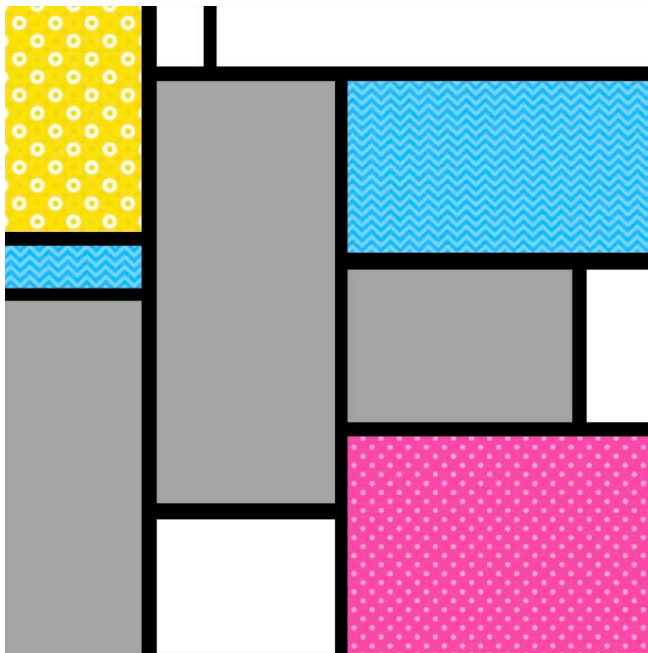
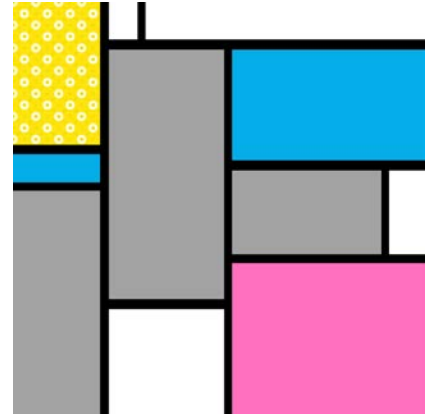
- Activate the Primary Warm Blue shape in the Layers panel.
- Double-click on the thumbnail of the Primary Warm Blue shape to open the Color Picker,
- In the Color Swatches panel, choose the Primary Yellow Cool swatch from the class swatches. Click OK in the Color Picker.



I've included CMY primary patterns and textured paper patterns in the class patterns so you can add those to the colored shapes instead.

Add a Pattern to a Colored Mask (Optional)

- Activate one of the colored shapes in the Layers panel (I activated Rectangle 11, which is the yellow shape on the top-left side of my document).
- In the Layers panel, click on the Create a New Fill/Adjustment Layer icon and choose Pattern. In the dialog box, open the Pattern Picker and choose the Dream Big Yellow Dotty-SR pattern from the CLR-Class-Patterns. Set the Scale to 100% and check Link with Layer. Click OK.
- In the Menu Bar, choose Layer > Create Clipping Mask.
- Follow the previous instructions to add patterns to the other colored shapes if desired.



TIP: Since we still have our original line shapes in the Master group, you can create variations of the template just by duplicating the group and moving the lines around on the document.

Save the Document

- Save your document (File > Save As) as a layered PSD file.
- Give the file a name.
- Save the document in the class folder for this lesson. Click Save.