



CREATIVELY

Yours
PHOTO/HOP ELEMENTS

LESSON 1: BORDER BRUSHES & TYPE

Creatively Yours

Lesson 1: Border Brushes & Type (Photoshop Elements)

Welcome to class! Create 4 dynamic brushes using one basic round brush and pair them with the type tool for some border-style fun!

© Syndee Rogers

[Terms of Use](#)

Load the Class Brushes

- Get the Brush tool.
- In the Tool Options, open the flyout menu and choose Load Brushes. Navigate to the CTY-Class-Brushes.abr file in the CTY-Class-Files folder. Click Load/Open. If you don't see the names of the class brushes, click on the flyout menu and choose Large List. Loading your swatches through the Preset Manager will place them in a folder.

Load the Class Swatches

- In the Menu Bar, choose Edit > Preset Manager. In the Preset Type menu choose Swatches. Click Add. Click Don't Save in the warning dialog (unless you have swatches you want to save). Navigate to the CTY-Class-Swatches.aco file in the CTY-Class-Files folder. Click Load/Open. If you don't see the names of the class swatches, click on the flyout menu and choose Large List. Click Done.

Download and Install the Font

Click on the links below, and download the fonts into the class folder for this lesson.

[Luckiest Guy](#)

Another good font: (Font shown in stitching samples) <https://www.dafont.com/cairo.font>

Installing fonts on a Mac:

Unzip the file: the files will usually automatically unzip when downloaded. But if not, double-click on the zipped file to unzip it.

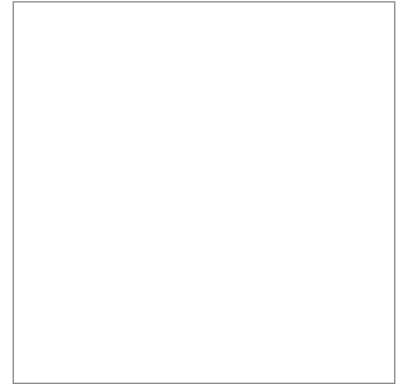
Double-click the font file in the Finder window, then click Install Font in the font preview window. Your Mac will then validate the font and open the Font Book app. The font is now installed and ready to use.

Installing fonts in Windows:

Right-click on one of the font files, and then select “Extract All” from the pop-up menu. Open the font folder, then right-click on the font file and select Install. Your font should be installed and ready to use.

Set Up the Workspace

- Begin in Advanced Mode (Expert Mode for earlier versions) of Photoshop Elements.
- Create a new 12x12 inch document (File > New > Blank File) at 300 ppi with a white background.



Dock the Color Swatches Panel

- In the Menu Bar, choose Window > Color Swatches.
- Click on the top of the Color Swatches panel, and drag it over to the right of the Layers panel tab until you see a blue highlight appear. Then release the cursor.

Add a Capital Letter

- Get the Horizontal Type tool.
- In the Color Swatches panel, choose the Seaside swatch from the CTY-Class-Swatches.
- In the Tool Options, open the Font Picker, and choose the Luckiest Guy font you installed at the beginning of the lesson. Set the size to 476 pt. Press Enter/Return so it sticks. We can leave the other settings as is since we are only typing one letter.
- On the document, click to place the cursor somewhere on the document, and type a capital letter. I typed the letter K.
- Click the checkmark to commit the type.



NOTE: This technique works best with bold fonts.

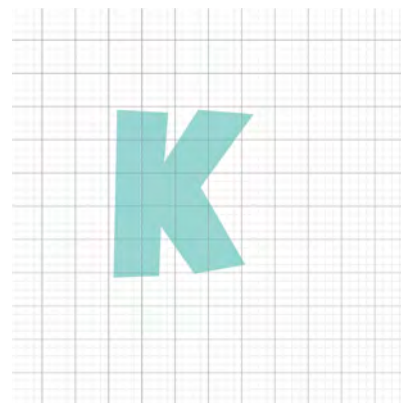
Turn on the Grid

The grid should be set to a 1 inch grid. If not, do the following:

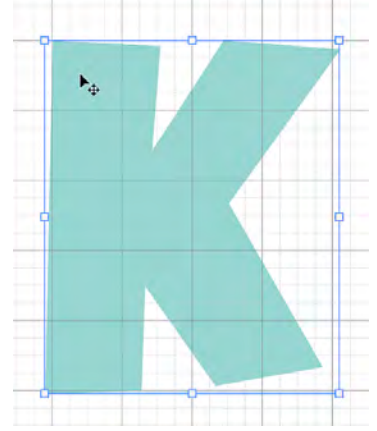
- Press Ctrl K (Mac: Cmd K) to open Preferences (Mac: Preferences or Settings).
- In the dialog box, click on Guides & Grid. Set the Gridline Every to 1 and the Subdivisions to 4. Click OK.
- In the Menu Bar, choose View > Grid.
- Back in the Menu Bar, choose View > Snap To > and make sure all options are unchecked.

NOTE: If you have these options checked, it may affect how your brush behaves.

- Get the Move tool.
- Press Ctrl + (Mac: Cmd +) to zoom in.



- On the document, click on the letter and move it so that the top-left corner of the letter sits up against one of the black horizontal grid lines. This will help us with the spacing of our brushwork.
- Press the letter D to reset the Color Chips to the default of black and white.



Brush Variation 1: Dots Brush

- Get the Brush tool.
- In the Tool Options, open the Brush Picker and choose the Round 35 brush from the CTY-Class-Brushes. Set the Size to 30. Open the Brush Settings and set the Spacing to 153%.

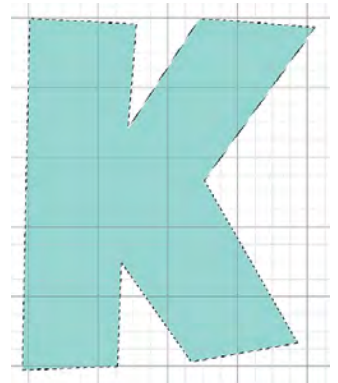
NOTE: You may need to adjust the size of the brush if you choose different letter or font.

Save the Dots Brush

- In the Tool Options, open the Brush Picker, then open the flyout menu, and choose Save Brush. Name the brush Dots and Click OK. Your new brush will be added under the class brushes in the Brush Picker.

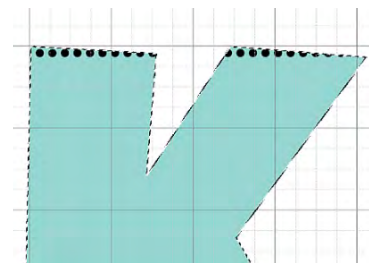
Make a Selection of the Letter

- In the Layers panel, Ctrl click (Mac: Cmd click) on the thumbnail of the type layer to make a selection of the letter.
- Click on the Create a New Layer icon to create a new layer.



Add the Brush to the Letter

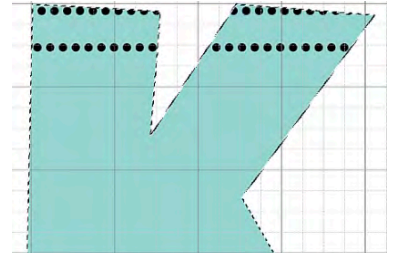
- On the document, starting at the top-left side of the letter, hold down the Shift key, and click and drag a line across the top of letter with the brush.
- Press Ctrl Z (Mac: Cmd Z) to undo if needed.



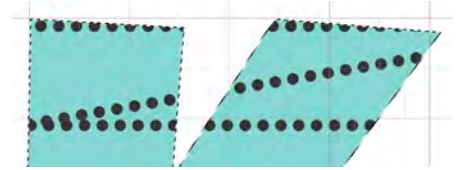
NOTE: Make sure to let go of the Shift key after adding each line with the brush.

This is where the grid is really helpful in the placement of the brushed border lines.

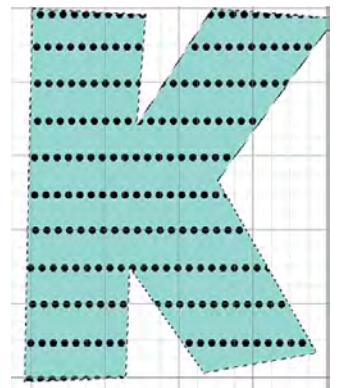
- Starting on the left side of the letter, move down two guidelines, and just under the line, hold down the Shift key, and click and drag with the brush across the letter. It's okay if your dotted lines sit a little bit on top of the guideline. Let go of the Shift key.



If you find that you get a zigzag line with the brush, try clicking once outside the selection before holding down the Shift key and adding the next line with the brush.



- Continue moving down every two guidelines and add dotted lines with the brush, until you reach the end of letter.



Handy Trick: Holding down the spacebar will temporarily switch to the Hand tool. This will allow you to click on the document, and then quickly move it around on the workspace. Once you release the spacebar, it will revert back to the previous tool, which in this case is the brush tool. This shortcut will work with other tools as well.

Brush Variation 2: Stitching Brush

We will use the Dots brush to create a new brush.

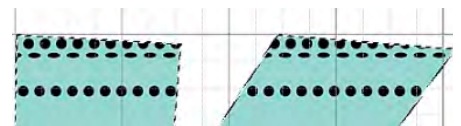
- In the Tool Options, set the Size to 35. Open the Brush Settings, and set the Spacing to 386% and the Roundness to 41%.

Save the Stitches Brush

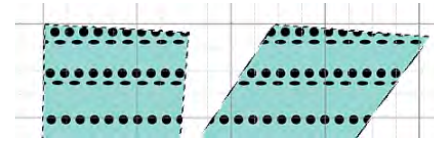
- Open the Brush Picker, then open the flyout menu and choose Save Brush. Name the brush Stitches and Click OK.

Add the Brush to the Letter

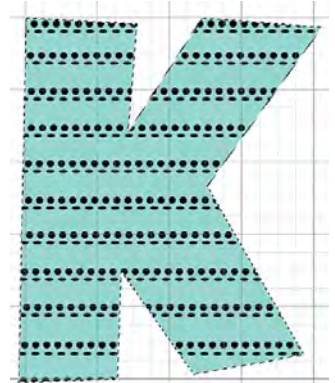
- On the document, starting on the left side of the letter under the first line of dots, hold down the Shift key, and click and drag a line of stitches across the letter. Let go of the Shift key.



- On the left side of the letter, move down, under the next line of dots, and holding down the Shift key, click and drag with the brush across the letter. Let go of the Shift key.



- Continue adding stitched lines with the brush, until you reach the end of the letter.
- Undo by pressing Ctrl Z (Mac: Cmd Z) if needed.
- Zoom in by pressing Ctrl + (Mac: Cmd +) if desired.



Brush Variation 3: Vertical Dashes Brush

We will use the Stitching brush to create a new brush.

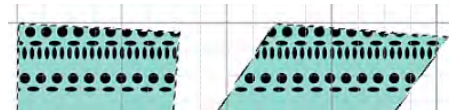
- In the Tool Options, open the Brush Settings, and set the Spacing to 165%, the Roundness to 37%, and the Angle to 90°.

Save the Vertical Dashes Brush

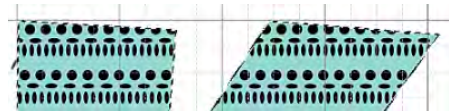
- Open the Brush Picker, then open the flyout menu, and choose Save Brush. Name the brush Vertical Dashes and click OK.

Add the Brush to the Letter

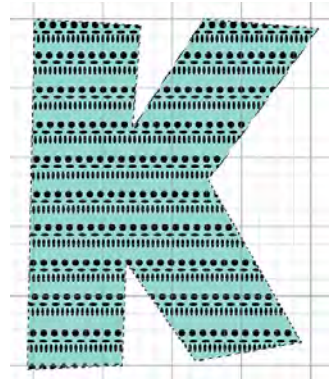
- Make sure the brush layer is still the active layer in the Layers panel.
- On the document, starting on the left side of the letter under the first line of stitches, and holding down the Shift key, click and drag with the brush across the letter. Let go of the Shift key.



- Move down under the next line of stitches on the left side of the letter, and holding down the Shift key, click and drag with the brush across the letter. Let go of the Shift key.



- Continue adding lines of vertical dashes with the brush, until you reach the end of the letter.
- Press Ctrl Z (Mac: Cmd Z) to undo if needed.



Brush Variation 4: Diagonal Lines Brush

We will use the Vertical Dashes brush to create a new brush.

- In the Tool Options, open the Brush Settings, and set the Spacing to 190%, the Roundness to 16%, and the Angle to 62°.

Save the Diagonal Lines Brush

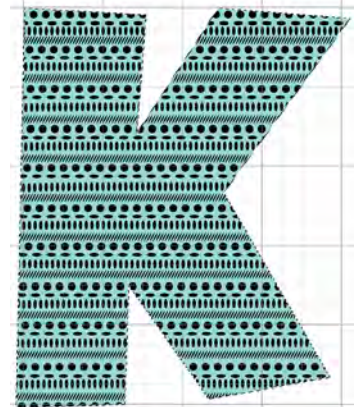
- Open the Brush Picker, then open the flyout menu, and choose Save Brush. Name the brush Diagonal Lines and click OK.

Add the Brush to the Letter

- On the document, starting on the left side of the letter, under the first line of Diagonal Lines, and holding down the Shift key, click and drag with the brush across the letter. Let go of the Shift key.



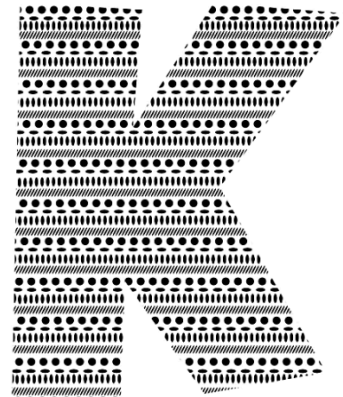
- Move down under the next line of vertical dashes on the left side of the letter and then click and drag with the brush across the letter. Let go of the Shift key.
- Continue adding lines with the diagonal lines brush, until you reach the end of the letter.



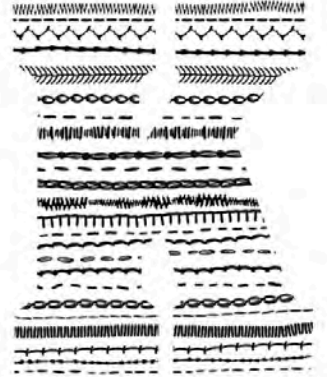
- Press Ctrl - (Mac: Cmd -) to zoom out.
- Press Ctrl D (Mac: Cmd D) to deselect.
- In the Menu Bar, choose View > Grid to turn off the Grid.

The project in this lesson is a simple example of using one brush to | create multiple brushes and then using them in a creative way. But imagine all the fun you can have using dynamic-style border brushes!

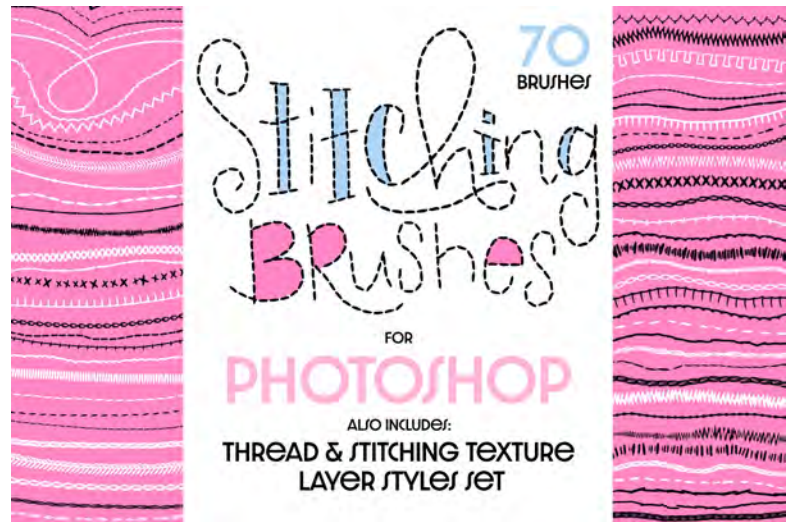
TIP: Turn off the Visibility icon of the Type layer to use the brushed letter layer on it's own!



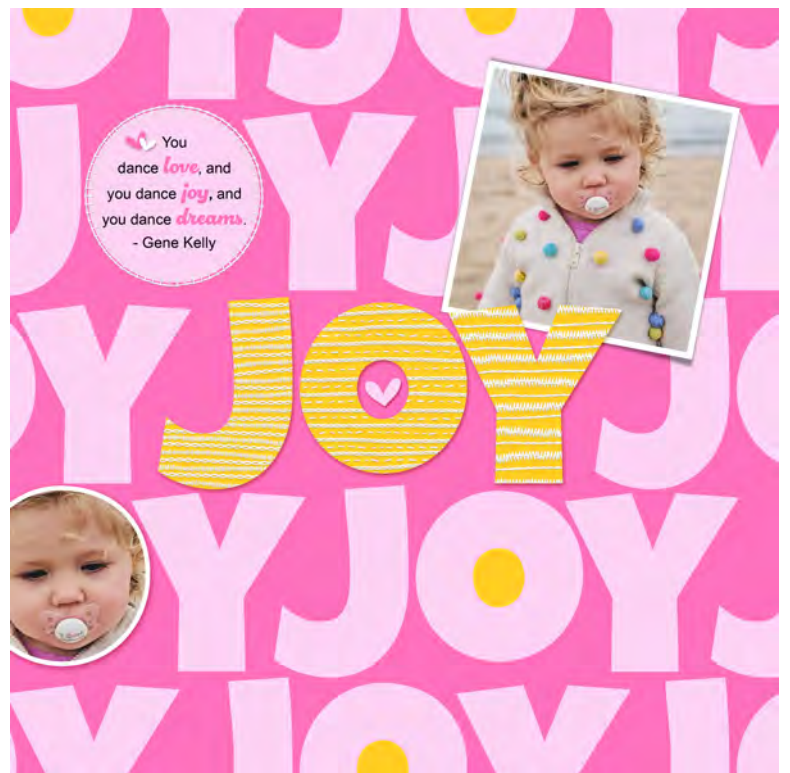
Here are some examples using some of my stitching brushes. The possibilities are endless! I used the Cairo font for these samples (Link on page 1).



Stitching Brushes & Layer Styles set



Layout by: Syndee Rogers
Stitching Brushes by: Syndee Rogers
(see link above)
Font: Luckiest Guy (used in this lesson)



Save the Brushes to Your Computer

- Get the Brush tool.
- In the Tool options, open the Brush Picker, then open the flyout menu and choose Preset Manager.
- In the Preset Manager, hold down the Ctrl key (Mac: Cmd key) and click on each brush you want to include in your set to activate them. Click Save Set.
- Give the brush set a name and navigate to the class folder for this lesson, or an easy-to-find location. Click Save.
- Click Done to close out of the Preset Manager.

I've included a template in the class files that you can also use with this technique.



Save the Document

- Save your document (File > Save As) as a layered PSD file.
- Give the file a name.
- Save the document in the class folder for this lesson. Click Save.