



Creatively Yours

Lesson 6: Frame to Shabby Brush (Photoshop Elements)

In this lesson, we'll transform the extracted frame from the last lesson using a filter, and create a set of layered brushes.

© Syndee Rogers

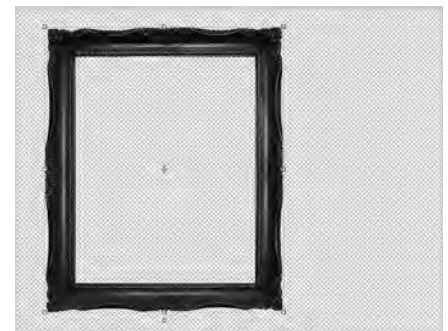
[Terms of Use](#)

Set Up the Workspace

- Begin in Advanced Mode (Expert Mode for earlier versions) of Photoshop Elements.
- Create a new 12 x 12 inch document (File > New > Blank File) at 300 ppi with a white background.
- Press the letter D to reset the Color Chips to black and white.



- Open the extracted frame photo document from the last lesson (File > Open).



Add the Frame to the Document

- In the Layers panel, click on the Visibility icons of the black Frame layer and the Frame Master group to hide them.
- Click on the Visibility icon of the Original frame layer to turn it back on and then, activate the layer.
- On the document, holding down the Shift key, click on the frame and drag it to the new 12x12 inch document we created earlier.



Transform the Frame

Transform the frame into a new shabby version of itself with the help of a filter.

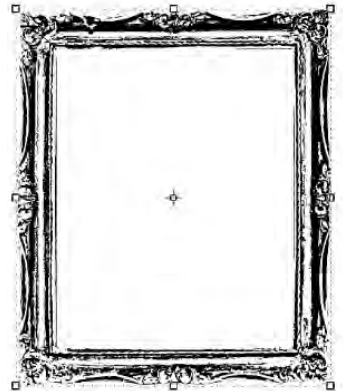
- In the Menu Bar, choose Filter > Filter Gallery. If the Filter Gallery is listed twice in the Filter menu, choose the second one.

If there are filters listed in the applied filter list in the lower right corner of the dialog box, you will need to delete those filters before applying the new filter. To do that:

- Select a filter in the applied filter list, and click the Delete Layer icon at the bottom of the list. Delete all the filters in the list.

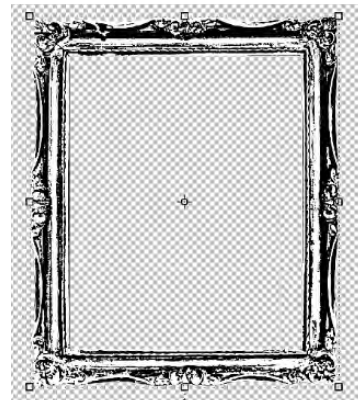
- In the dialog box, choose the Photocopy filter from the Sketch filters. If you do not see the filter folders, click on the Show Filters icon. Set the Detail to 24 and the Darkness to 50. Click OK.
- In the Layers panel, double-click on the name of the layer and name it Shabby frame. Press Enter/Return to commit the change.

NOTE: When using a different frame or object, you may need to adjust the settings to get a similar result.

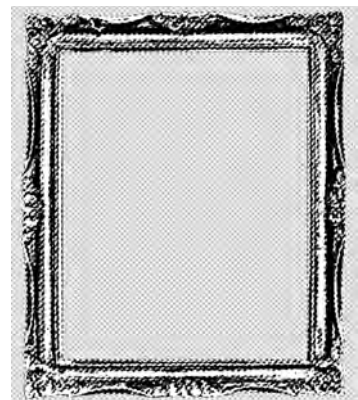


Create an Inset for the Frame

- Click on the Visibility icon of the Background layer to hide it.
- Get the Magic Wand tool.
- In the Tool Options, click on the Add to Selection icon, set the Tolerance to 32, uncheck Sample All Layers and Contiguous. Check Anti-aliasing.

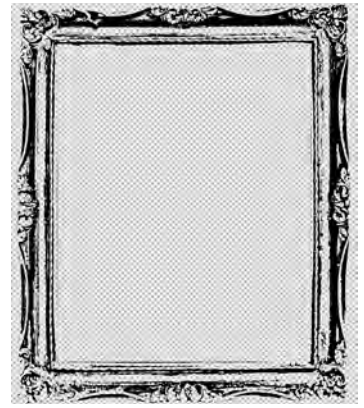


- Press Ctrl + (Mac: Cmd +) to zoom in.
- On the document, click on a white area of the frame to create a selection.
- Press Ctrl J (Mac: Cmd J) to place a copy of the selection on a new layer.
- In the Layers panel, double-click directly on the name of the layer, name it Shabby frame inset and press Enter/Return to commit the change.



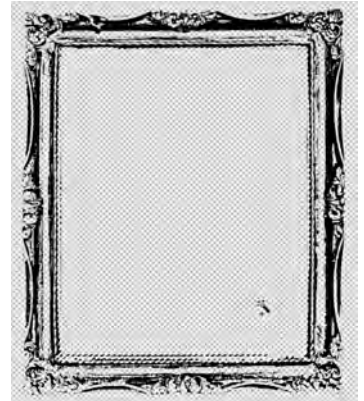
Delete the White Areas of the Frame

- Ctrl click (Mac: Cmd click) on the thumbnail of the Shabby inset layer to make a selection.
- Press Alt Backspace (Mac: Opt Delete) to fill the selection with the Foreground color.
- In the Layers panel, click on the Visibility icon of the Shabby frame inset layer to hide it.
- Activate the Shabby frame layer.
- With the selection still active, press Backspace/Delete to delete the white areas of the shabby frame.
- Press Ctrl D (Mac Cmd D) to deselect.



Create a Mask for the Frame

- In the Tool Options, check Contiguous.
- On the document, click inside the frame to create a selection.



- In the Layers panel, hold down the Ctrl (Mac: Cmd) key and click on the Create a New Layer icon. This will create a new layer below the active layer.
- Press Alt Backspace (Mac: Opt Delete) to fill the selection with the Foreground color.
- Press Ctrl D (Mac Cmd D) to deselect.
- Press Ctrl - (Mac: Cmd -) to zoom out.
- In the Layers panel, click on the Visibility icon of the Background layer to turn it back on.
- Double-click directly on the name of the active layer and name the layer Shabby frame mask. Press Enter/Return to commit the change.

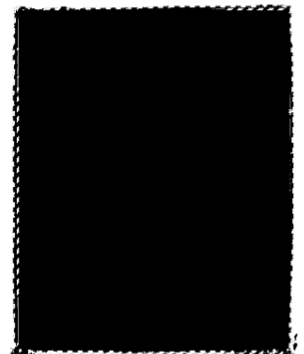


Create the Brushes

Making our frame layers into brushes allows us to easily use different colors for each frame layer.

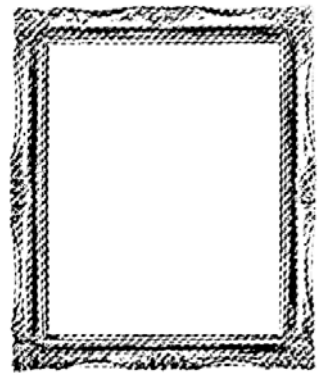
Define the Shabby Frame Mask Brush

- Click on the Visibility icon of the Shabby frame layer to hide it.
- Ctrl click (Mac: Cmd click) on the thumbnail of the Shabby frame mask layer to make a selection.
- In the Menu Bar, choose Edit > Define Brush from Selection.
- Name the brush Shabby Frame Mask and Click OK.
- Press Ctrl D (Mac Cmd D) to deselect.



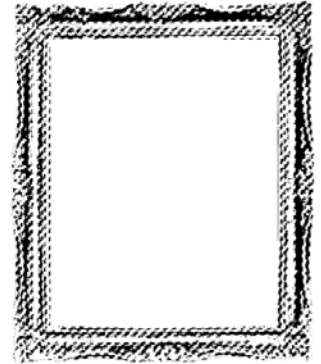
Define the Shabby Frame Brush

- In the Layers panel, click on the Visibility icon of the Shabby frame mask layer to hide it.
- Click on the Visibility icon of the Shabby frame layer to turn it back on.
- Ctrl click (Mac: Cmd click) on the thumbnail of the Shabby frame layer to make a selection.
- In the Menu Bar, choose Edit > Define Brush from Selection.
- Name the brush Shabby Frame and Click OK .
- Press Ctrl D (Mac Cmd D) to deselect.



Define the Shabby Frame Inset Brush

- Click on the Visibility icon of the Shabby frame layer in the Layers panel to hide it.
- Click on the Visibility icon of the Shabby frame inset layer to turn it back on.
- Ctrl click (Mac: Cmd click) on the thumbnail of the Shabby frame inset layer to make a selection.
- In the Menu Bar, choose Edit > Define Brush from Selection.
- Name the brush Shabby Frame Inset and Click OK.
- Press Ctrl D (Mac Cmd D) to deselect.



Group the Layers

- In the Layers panel, activate the Shabby frame inset layer, then hold down the Shift key, and click on the Shabby frame mask layer so all your frame layers are active.
- Click on the Create a New Group icon.
- Double-click directly on the name of the group and name it Shabby Frame Master, then press Enter/Return to commit the change.
- Click on the Create a New Layer icon.
- In the Color Swatches panel, choose the Charcoal swatch from the class swatches (CTY-Class-Swatches).
- In the Layers panel, click on the Visibility icon of the Group to hide it.

Stamp the Shabby Frame Mask Brush

- Get the Brush tool.
- In the Tool Options, open the Brush Picker and choose the Shabby Frame Mask brush. Leave the settings as is.
- On the document, click once in the middle of the document to stamp the brush.



Stamp the Shabby Frame Inset Brush

- In the Layers panel, click on the Create a New Layer icon.
- In the Color Swatches panel, choose the Mint swatch.
- In the Tool Options, open the Brush Picker and choose the Shabby Frame Inset brush. Leave the settings as is.
- On the document, click once right on top of the previously stamped shabby mask to stamp the brush.



NOTE: Your brush layers do not need to match up perfectly, having them a bit offset adds to the 'shabby' look we are going for.

Stamp the Shabby Frame Brush

- In the Layers panel, activate the mask layer, and then, click on the Create a New Layer icon.
- In the Color Swatches panel, choose the Eggshell swatch.
- In the Tool Options, open the Brush Picker and choose the Shabby Frame brush. Leave the settings as is.
- On the document, click once right on top of the previously stamped brush layers to stamp the brush.



NOTE: Depending on the colors you use, you may need to reorder the Shabby Frame and Shabby Frame Inset layers in the Layers panel. In this case, since the Shabby Frame brush is such a light color, it looked better to stamp the Shabby Frame Inset brush on the layer above it.

Optional: You can group your stamped layers together following the same instructions to group the original frame layers above.

Tips for using this technique:

- Try this technique on other frames and objects!
- You can use the individual brushes on their own or layer them.

Layout Idea 1:

In this layout, I stamped the Shabby Frame brush to fill up the entire page. Then, I stamped the Shabby Frame Mask brush under each frame on a layer below the frame layer. Then, I clipped photos and papers to the masks. Finally, I added elements and journaling to complete my page.



Layout Idea 2:

In this layout, I stamped all three of the Shabby Frame brushes to create one frame. Then, I grouped the frame layers and duplicated the group. I then rotated the duplicate group 90° clockwise and moved the group on my document. I duplicated the rotated frame group and moved it up so that it extended off the top of my page. Then, I added a title and journaling to the center of the frame. Finally, I clipped photos to the masks and added papers and elements to complete my page.



Save the Brushes to Your Computer

- Get the Brush tool.
- In the Tool options, open the Brush Picker, then open the flyout menu and choose Preset Manager.
- In the Preset Manager, hold down the Ctrl key (Mac: Cmd key) and click on each brush you want to include in your set to activate them. Click Save Set.
- Give the brush set a name and navigate to the class folder for this lesson, or an easy-to-find location. Click Save.
- Click Done to close out of the Preset Manager.

Save the Document

- Save the document (File > Save As) as a layered PSD file.
- Give the file a name.
- Save the document in the class folder for this lesson. Click Save.
- Close the extracted frame photo document (File > Close) from the last lesson without saving.